

| | | |
|---------------|------------------|----------------|
| Centre Number | Candidate Number | Candidate Name |
|---------------|------------------|----------------|

NAMIBIA SENIOR SECONDARY CERTIFICATE

GEOGRAPHY ORDINARY LEVEL

4332/1

PAPER 1

2 hours

Marks 75

2018

No additional materials.

INSTRUCTIONS AND INFORMATION TO CANDIDATES

- Write your Centre Number, Candidate Number and Name in the spaces at the top of this page.
- Write your answers on the Question Paper in the spaces provided.
- Write in dark blue or black pen.
- You may use a soft pencil for any rough work, diagrams or graphs.
- Do not use correction fluid.
- Do not write in the margin *For Examiner's Use*.
- Answer **three** questions, **one** from each Section.
- Sketch maps and diagrams should be drawn whenever they serve to illustrate an answer.
- The number of marks is given in brackets [] at the end of each question or part question.

| For Examiner's Use | | |
|--------------------|--|--|
| 1 | | |
| 2 | | |
| 3 | | |
| 4 | | |
| 5 | | |
| 6 | | |
| Total | | |
| Marker | | |
| Checker | | |

This document consists of **22** printed pages and **2** blank pages.



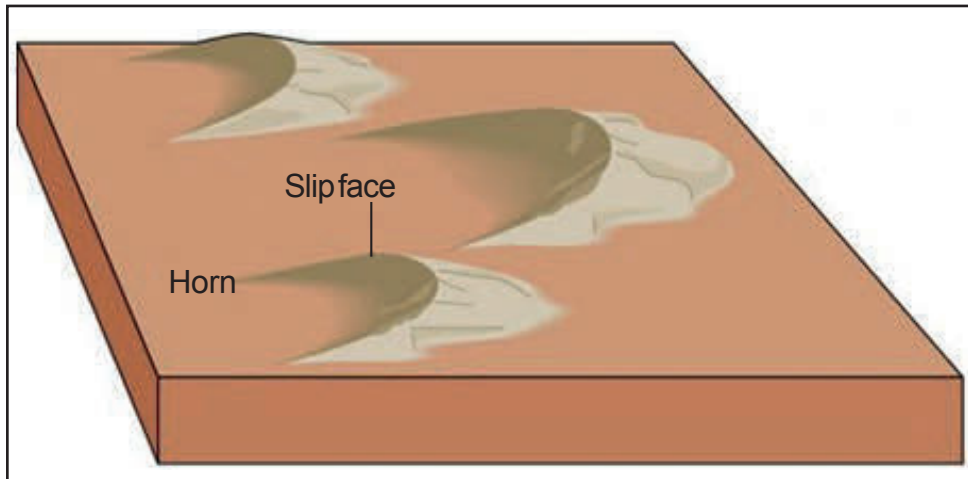
Republic of Namibia
MINISTRY OF EDUCATION, ARTS AND CULTURE

SECTION A: PHYSICAL WORLD

Answer **one** question from **Section A**.

- 1 (a) Study Fig. 1, which shows landforms **A** and **B** formed by wind action in tropical deserts.

A



B

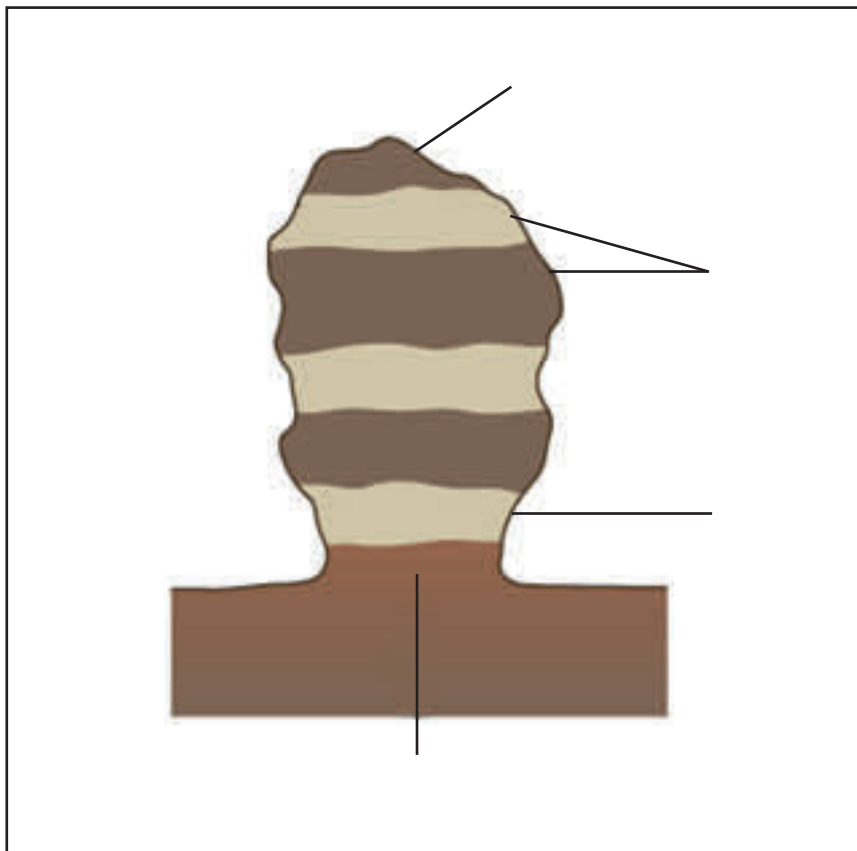


Fig. 1

(i) Identify landforms **A** and **B**.

A..... [1]

B..... [1]

(ii) State whether the landforms are formed by wind erosion or deposition.

A..... [1]

B..... [1]

(iii) On Fig. 1, draw an arrow to show the direction of the wind on landform **A**. [1]

(iv) Explain the development of landform **A**.

.....

.....

.....

.....

.....

.....

[3]

(v) On Fig. 1, add labels to describe the appearance of landform **B**. [4]

(b) Study Fig. 2, which shows the influence of latitude on surface temperature.

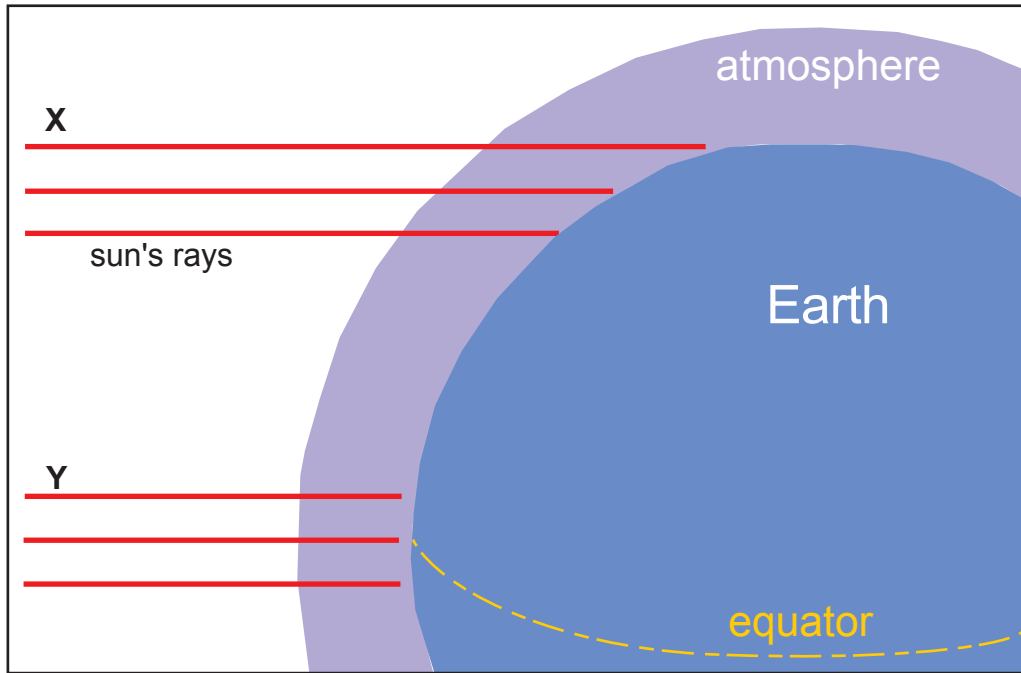


Fig. 2

(i) Using the diagram only, describe the influence of latitude on surface temperature.

.....

.....

.....

.....

.....

.....

.....

.....

.....

[4]

(ii) Name **two** other factors that influence surface temperature.

1

2

[2]

- (iii) For a named area of tropical desert you have studied, explain why and how it is at risk from human activities.

For
Examiner's
Use

Named Area

.....

.....

.....

.....

.....

.....

.....

.....

.....

.....

.....

.....

.....

.....

.....

.....

.....

.....

.....

[7]

[25]

- 2 The surface of the physical landscape is influenced by processes of weathering and erosion.

For
Examiner's
Use

- (a) Explain the difference between weathering and erosion.

.....

.....

.....

.....

[2]

- (b) Study Fig. 3, which shows two factors influencing weathering.

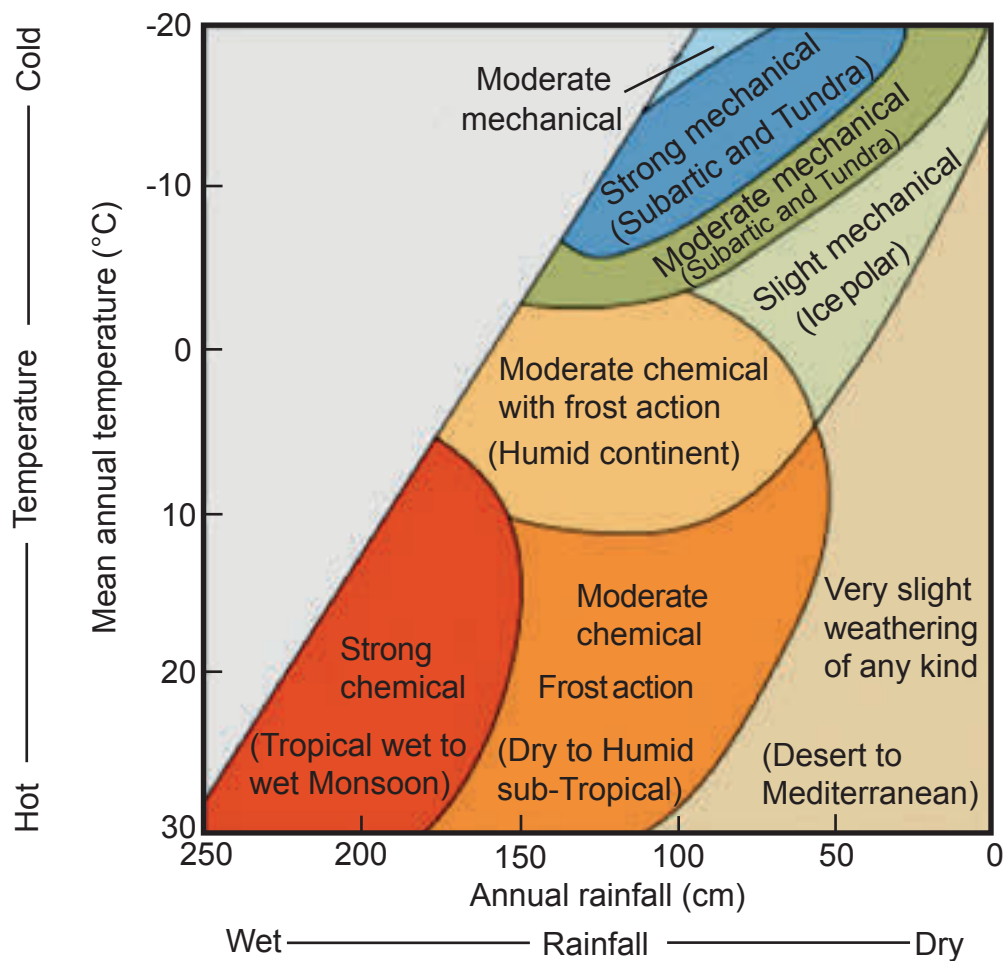


Fig. 3

- (i) State the ranges of temperature, and rainfall figures needed for strong mechanical weathering to occur.

.....

.....

[2]

- (ii) State the temperature and rainfall figures needed for very slight weathering of any kind to occur.

.....
.....

[2]

- (iii) State the type of weathering that occurs at 100 cm of annual rainfall and 5°C mean annual temperature.

.....

[1]

- (iv) State the climatic region where +15°C and 100 cm of annual rainfall occur.

.....

[1]

- (v) State the climatic region where –5°C with 80 cm of annual rainfall occur.

.....

[1]

(c) Study Fig. 4, which shows a type of mechanical rock weathering.

For
Examiner's
Use



Fig. 4

(i) Name the type of mechanical weathering shown.

[1]

(ii) Describe the weathering process shown in Fig. 4 and outline its results.

Process

.....

Results

.....

[6]

(iii) State **two** climate characteristics which may encourage this type of weathering to take place.

1

.....

2

.....

[2]

(d) In your opinion what type of weathering will be common in the northern parts of Namibia?

Give reasons to support your answer.

Type of weathering.....

Reasons.....

.....

.....

.....

.....

.....

.....

.....

.....

[7]

[25]

SECTION B: ECONOMIC ACTIVITIES AND THE USE OF NATURAL RESOURCES

For
Examiner's
Use

Answer **one** question from **Section B**.

3 (a) Study Fig. 5, which shows the total carbon emissions of different countries.

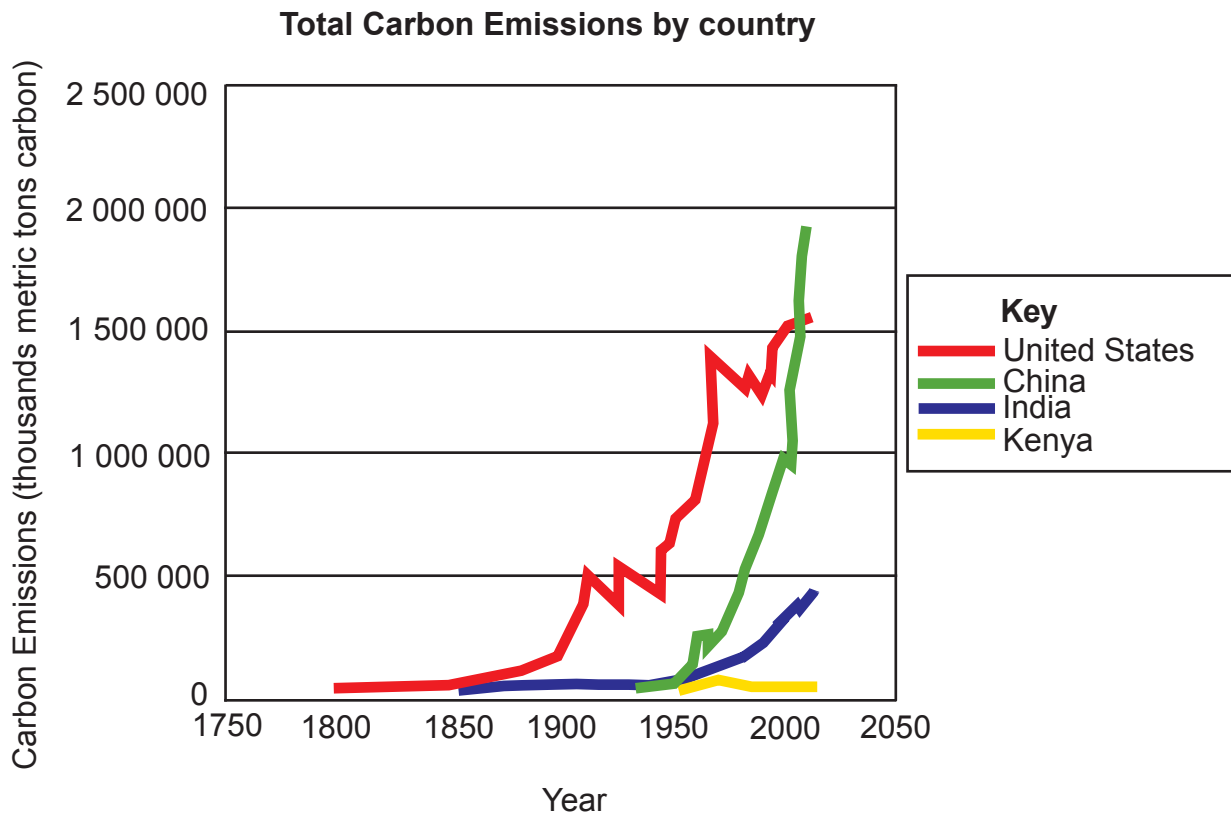


Fig. 5

Compare the trend in carbon emissions.

.....

.....

.....

.....

.....

.....

.....

.....

[5]

- (b) (i) Describe global warming as a natural phenomenon.

.....

.....

.....

.....

[2]

- (ii) Describe **two** causes of global warming.

1

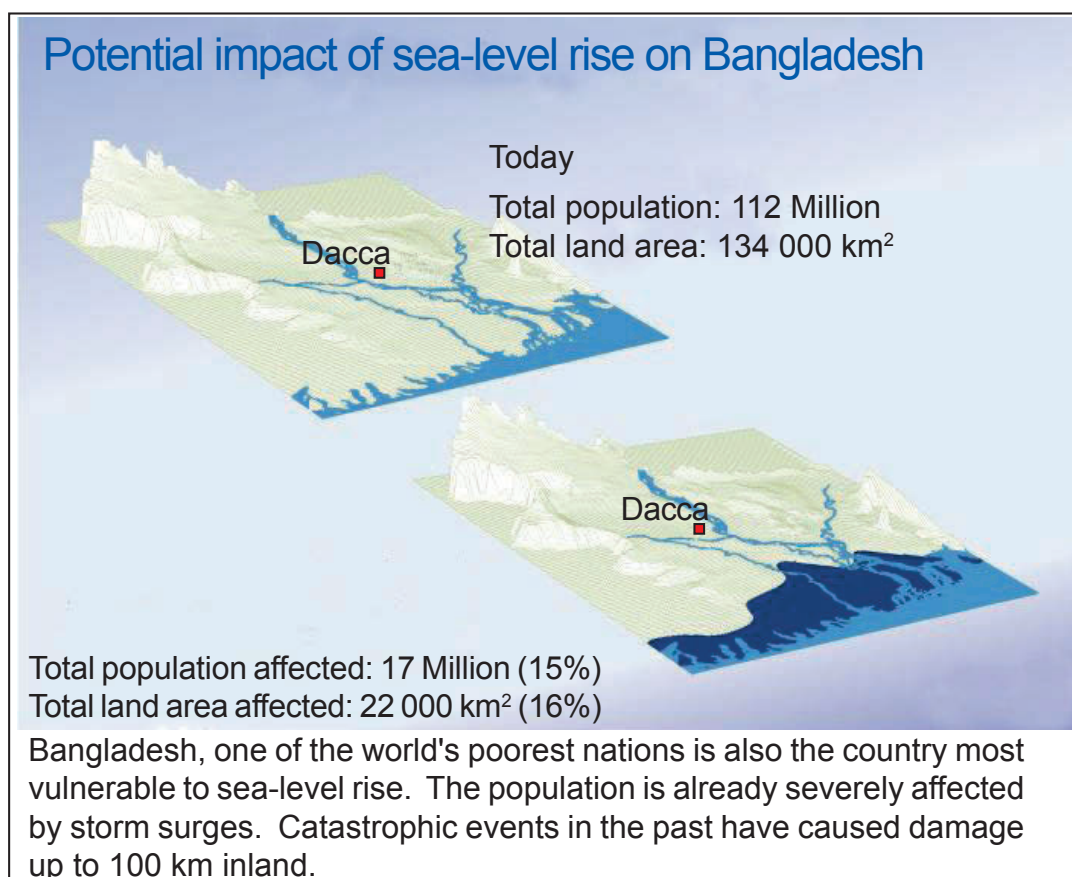
.....

2

.....

[2]

- (c) Study Fig. 6, which shows potential impact of sea-level rise in Bangladesh in the next 20 to 30 years.



Key

- land surface
- delta and coastal waters
- additional area submerged after sea-level rise.

Fig. 6

Using Fig. 6 and other studies you have made, describe the possible effects of global warming on Bangladesh.

.....

.....

.....

.....

.....

.....

.....

.....

.....

.....

[6]

- (d) (i) What measures could be taken to reduce global warming and its' effects on Bangladesh and other countries?

.....

.....

.....

.....

.....

.....

[3]

(ii) Why are such methods often ineffective?

For
Examiner's
Use

.....

.....

.....

.....

.....

.....

.....

.....

.....

.....

.....

.....

.....

[7]

[25]

4 (a) Study Fig. 7, which shows some of the main features of tourism in Namibia.

For
Examiner's
Use

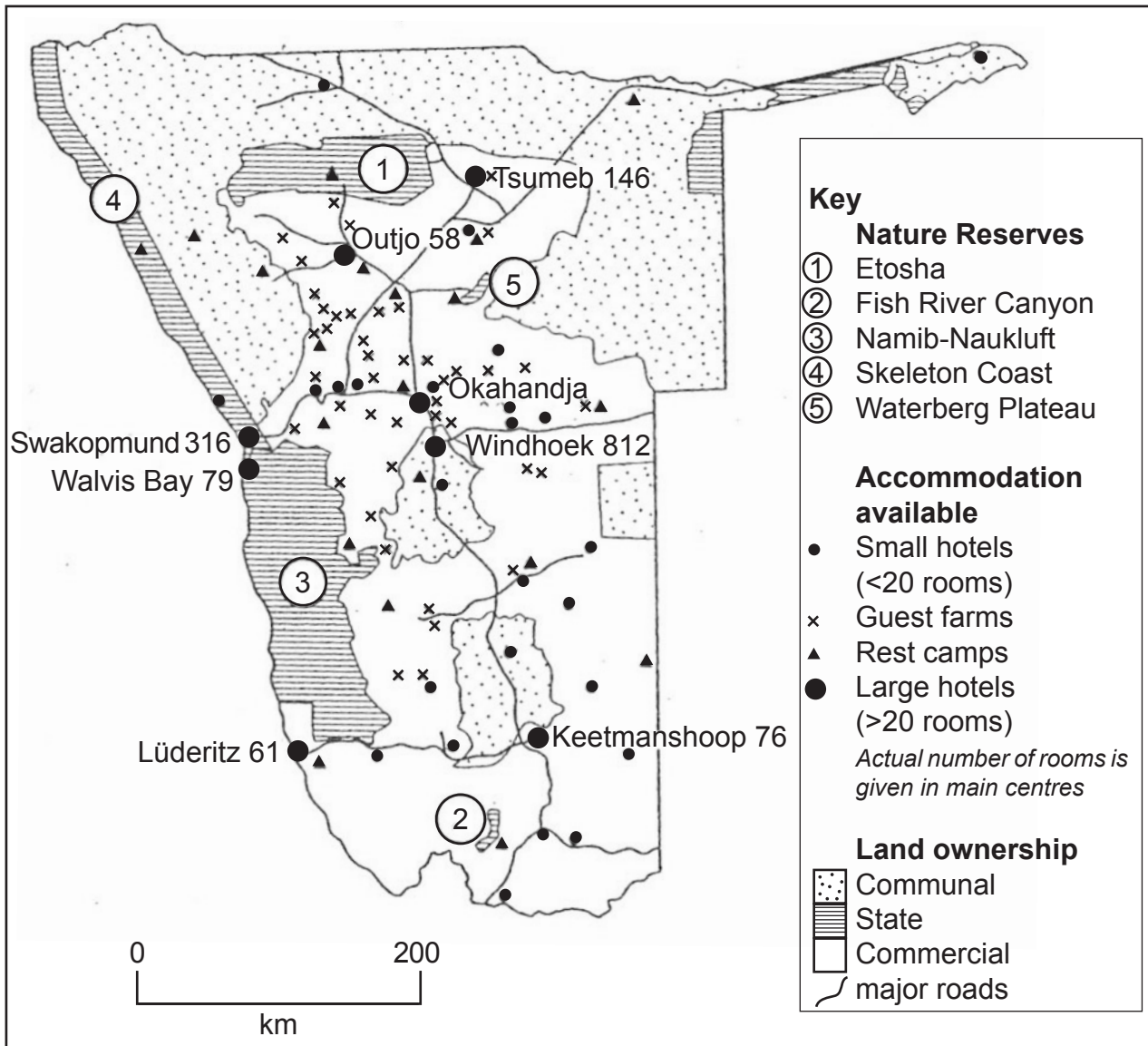


Fig. 7

(i) Describe the distribution of accommodation centres for tourists.

.....

.....

.....

.....

.....

.....

.....

.....

[4]

(ii) Suggest reasons for the distribution you have described in (a) (i).

.....

.....

.....

.....

.....

.....

.....

.....

[4]

(b) (i) Suggest why countries in Southern Africa only have a small share of the world's international tourist industry.

.....

.....

.....

.....

.....

.....

[3]

(ii) Explain the advantages for countries in Southern Africa of having a larger share of the world's international tourists.

.....

.....

.....

.....

.....

.....

.....

.....

.....

.....

[5]

- (c) The growth of tourism may encourage the development of other economic activities such as craft industries.

- (i) Describe **five** of the main features of craft industries.

1

.....

2

.....

3

.....

4

.....

5

.....

[5]

- (ii) Suggest why governments of countries in Southern Africa may encourage the growth of these industries.

.....

.....

.....

.....

.....

.....

.....

.....

[4]

[25]

SECTION C: POPULATION AND SETTLEMENT

For
Examiner's
Use

Answer **one** question from **Section C**.

- 5 (a)** Study Fig. 8, which shows a population pyramid of a developing country in Africa.

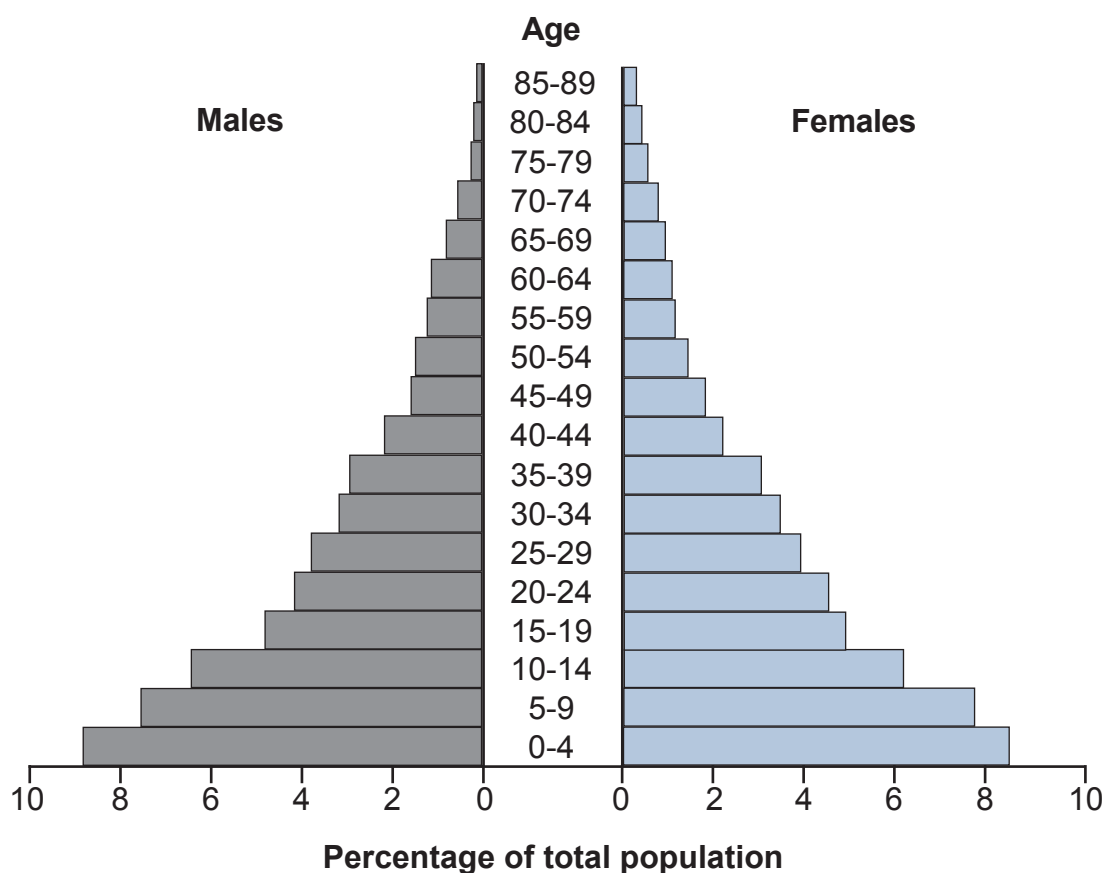


Fig. 8

- (i) What percentage of the population is aged between 10 and 14 years?

[1]

- (ii) Describe the structure of the population shown in the pyramid.

[4]

(iii) Suggest **five** reasons for the structure you have described in (a) (ii).

- 1
-
- 2
-
- 3
-
- 4
-
- 5
-

[5]

(iv) Describe **four** of the problems governments of developing countries experience due to a population structure similar to the one shown in Fig. 8.

- 1
-
- 2
-
- 3
-
- 4
-

[4]

- (v) Rural-urban migration is common in countries which have a population structure similar to the one shown in Fig. 8.

State the changes which are likely to occur in the population of rural areas as a result of this type of migration.

.....

.....

.....

.....

.....

.....

.....

[4]

- (b) Life expectancy in some countries, especially in Africa, is being reduced by the spread of HIV/AIDS.

Suggest why some countries are more successful than others in dealing with the HIV/AIDS problem.

.....

.....

.....

.....

.....

.....

.....

.....

.....

.....

.....

.....

.....

.....

.....

.....

.....

.....

.....

.....

[7]

[25]

- 6 (a) Maps X, Y and Z (Fig. 9) show three different settlements in rural areas.

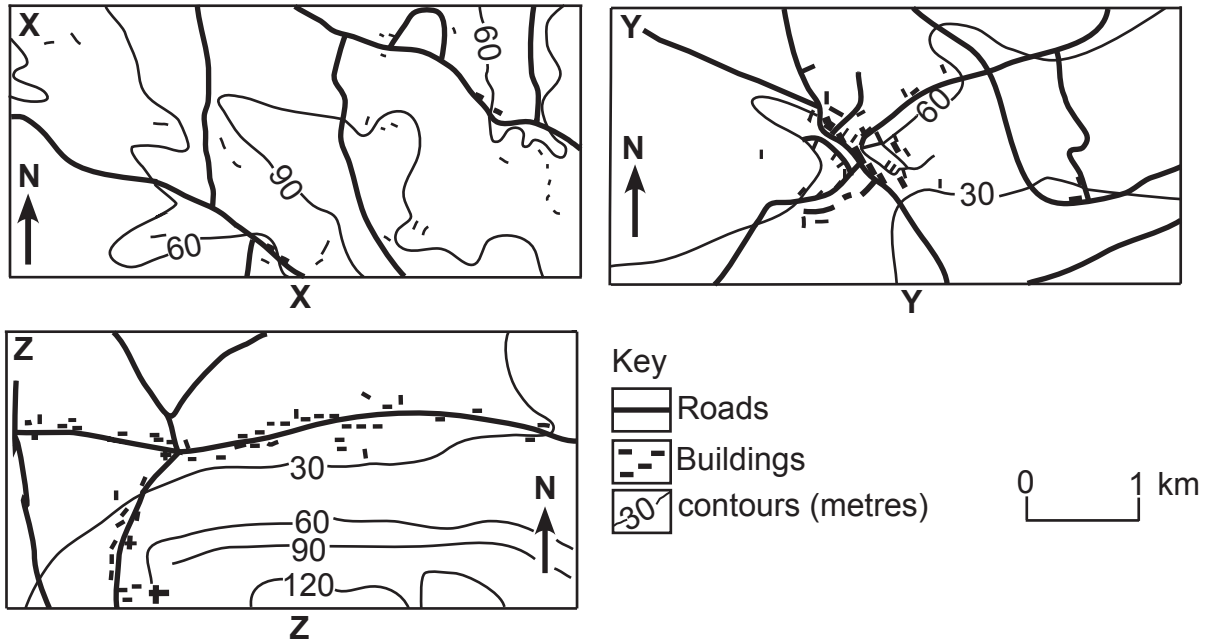


Fig. 9

- (i) Name each settlement pattern shown in Fig. 9.

X.....

Y.....

Z.....

[3]

- (ii) Describe each settlement pattern.

X.....

.....

.....

.....

Y.....

.....

.....

.....

Z.....

.....

.....

.....

[6]

- (iii) With reference to Fig. 9 and to examples you have studied, explain why each of these rural settlement patterns may have developed.

.....

.....

.....

.....

.....

.....

.....

.....

.....

.....

.....

.....

.....

.....

[6]

- (b) (i) Is movement from urban areas to rural villages more likely to take place in developed or developing countries?

.....

[1]

- (ii) Suggest the impact of **rural-urban** movement on the Central Business District (CBD).

.....

.....

.....

.....

.....

.....

.....

.....

[3]

(c) Study Fig. 10, which shows an urban problem.

For
Examiner's
Use



Fig. 10

(i) State the urban problem shown.

[1]

(ii) State **two** environmental problems associated with this urban problem.

1

2

[2]

(iii) Suggest how the local authority could help to solve this urban problem.

.....

.....

.....

.....

.....

.....

[3]

[25]

BLANK PAGE

BLANK PAGE

